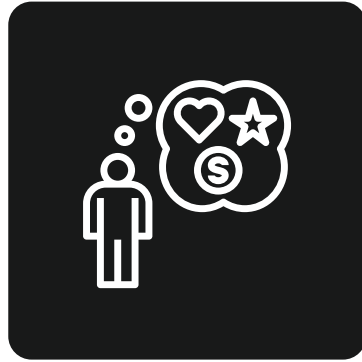


Scoring Matrix for CPLS Scholarship Applications

Total points possible = 100

Demonstrated Need 30%

What is the financial need? Items we may consider: org budget, org mission, artistic background, amount of expenses, etc.



Equity 10%

5% - applicant from rural area.

5% - applicant is BIPOC, LGBTQ+, persons with disabilities identifying, org led, or serves those audiences.



Professional Development 30%

Org or artist's desired outcomes, mission relevance, Learning goals, reasons for attending, etc.



Leveraging the Scholarship - 30%

Current creative placemaking work, placemaking connections, capacity, future goals, etc.

